

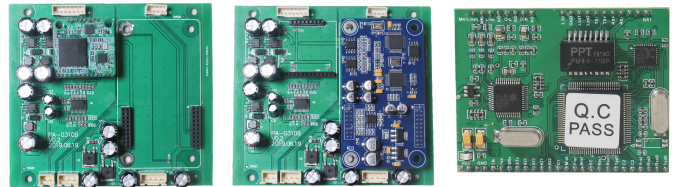
Class D Mixer Amplifier with Audio Sources



Mixer Amp with Built-in USB/SD/AUX/Tuner/Bluetooth and optional DSP / Dante Network

- MA-120TD @ 120W RMS Power
- MA-240TD @ 240W RMS Power
- MA-350TD @ 350W RMS Power
- MA-500TD @ 500W RMS Power

Note:
MA-TD DANTE:
 Optional Dante Audio module for MA-120TD series to Order
MA-TD DSP:
 Optional DSP module for MA-120TD series to Order
MA-TD IP:
 Optional IP module for MA-120TD series to Order
MA-TD SIP:
 Optional SIP module for MA-120TD series to Order



MA-TD DANTE MA-TD DSP MA-TD IP / MA-TD SIP



Description:

Highly flexible mixer amplifiers available at 120, 240, 350 and 500W RMS power and equipped with all necessary microphone and aux inputs for a wide variety of voice and background music applications such as retail shops, restaurants and bars, service centers, houses of worship, warehouses and many more.

Features:

- ▶ Priority:EMC >MIC1>MIC2, MIC3, AUX1, AUX2
- ▶ 4 microphone and 2 auxiliary inputs
- ▶ 1 Dante Audio and 1 DSP control inputs
- ▶ 100V and 4-16 Ohms rear panel switchable speaker outputs
- ▶ Automatic mute function for paging and announcements
- ▶ Individual input gain controls with master volume control
- ▶ Mp3/TUNER/Bluetooth module with screen display
- ▶ 24VDC backup power supply
- ▶ Standard 1U 19 inch size with detachable mounting ears
- ▶ Speaker output short circuit protection

SPECIFICATIONS	MA-120TD	MA-240TD	MA-350TD	MA-500TD
Rated Power Output	120W	240W	350W	500W
Output	100V or 4 - 16 ohm switchable			
Frequency Response	60 - 16,000 Hz, +/- 3dB			
THD	Less than 0.5% at 1kHz (1/3 Rated Power)			
S/N Ratio	Better than 80dB			
Tone Controls	BASS: 100 Hz (+/- 10dB), TREBLE: 10k Hz (+/- 10dB)			
Controls	All input gain, 1 treble, 1 bass, 1 mute, and power switch			
Cooling	Internal 12VDC fan, extensive heat sinking			
Indicators	Power indicator LED, PROT, 100V, 4-16 OHM, CLIP, SIG			
Protection	Current limiter, short circuit and thermal protection circuits			
Power Consumption	170W	340W	500W	720W
Power Requirments	220-240V AC, 50/60 Hz; 24VDC			
Dimensions	44.5(H) x 483(W) x 330(D) mm			
Built-in Dimensions	1 U rack 19 inch			
Net Weight	5.6kg	5.6kg	5.7kg	5.7kg
Finish	Panel: Aluminium plate, black Case: steel plate, black			