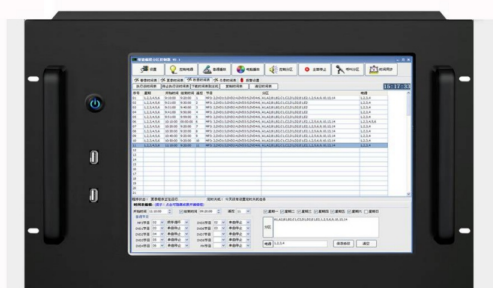


System Manager E-SMR 15/ E-SMR 17

Features:

- ▶ A rugged design professional controller where system server and user interface installed to manage the whole system over TCP/IP network
- ▶ With 15 or 17 inch industrial grade touch screen with easy control of the entire system
- ▶ Functioned with advanced PA features including time schedule broadcast management, paging console, zone broadcast, etc. via user friendly interface
- ▶ To show status of working of all devices
- ▶ Timed scheduled broadcast
- ▶ Real-time broadcast of external source via A/D converter
- ▶ 8 Units height of the standard 19 inch rack
- ▶ Media storage management
- ▶ Access control



Model	E-SMR 15	E-SMR 17
Screen size	15 inch	17 inch
Screen color	TFT24 bit true color	
Control mode	1024*768 resolution LCD touch screen	
Ambient temperature	5°C-40°C	
Relative humidity	≥ 75%	
Motherboard	New industrial grade Intel industrial mainboard	
Standard interface	1 × LAN network port; 6 × USB; 2 × serial port; 1 × parallel port; 1 × VGA; 1 × HDMI; 4 × lotus input; 4 × lotus output; 1 × 3.5 input; 1 × 3.5 output	
Hard disk	64G SSD	
Memory	DDR3 4G (the capacity will increase continuously due to continuous product upgrades)	
NIC	mainboard integrated network card	
Graphics card	mainboard integrated graphics	
Sound card	mainboard integrated sound card, high-definition audio	
CPU	dual core 2.4GHz	
Dimension	485*335*320mm(W*H*D)	
Packing size	560*380*380mm(L*W*H)	
Maximum power consumption	80W	
Normal power	≤40W	
Other	DVD drive; keyboard; mouse	

ECO IP Software ECO-IP

Features:

- ▶ IP System software to control the entire ECO IP System as a necessary software
- ▶ All to play music from PC to the IP terminal and speakers
- ▶ Allow to make announcement from PC to the IP terminal or IP Speakers
- ▶ Support scheduled announcement for unmanned Operations.
- ▶ Support Audio and IP speaker monitoring
- ▶ Support operation Logs
- ▶ Support offline talkback (without server)

